

flauto

CANTO AL BEATO D. LENTINI.

Strumentazione ed elaborazione
del M: A. EMANUELE

Ref M: A- ENANUELE

Au Revoir

H. LANGEVELL

Allegretto

La volta

FINE

rell.

Rocheville, 28/01/2000

B 8



Piccolo mib.

CANTO AL BEATO D. LENTINI

Elle s'adresse à
l'humiliation par bards
LEA-EMAUVELLE

JEAN-EMANUEL

Handwritten musical score for "The Mission for Santa Cecilia" by Engruelf. The score is written on four staves. The first staff is marked "Andante" and "M. 1. 4". The second staff has a circled "2" above it. The third staff has "pizzicato" written above it. The fourth staff ends with "FINE" and "rall.". The title "The Mission for Santa Cecilia" is written in the top right corner, and "Engruelf" is written below it.

Receivables, 28/01/2000

1° clarinetto Aspetta A.B. CANTO AL BEATO D. LENTINI

Audace

mf

più mosso

3

5

1-2-3

rit.

FINE

Flauto e strumento per banda

del M.^o A. EMANUELE

Roccaraso, 28/01/2000



1° clarinetto Aspetta A.B. 2° A. CANTO AL BEATO D. LENTINI

Audace

mf

più mosso

3

5

1-2-3

rit.

FINE

Flauto e strumento per banda

del M.^o Alessandro Menich

Tax Software A's.

CANTO AL BEATO D. LENTINI

Audacity

Andante

mf

2

mf

4-2-3

Viv.

FINE

Fluorazione e strumetolice per boud

del M^o Alejandro Zueco

Rocelle, 28/01/2000

Chiarito sopra il L. B.

CANTO AL BEATO D. LENTINI.

Audoule

Audrey

Handwritten musical score for "Audrey" in G major, 2/4 time. The score consists of three staves. The first staff begins with a treble clef, a key signature of one sharp (F#), and a 2/4 time signature. It contains a melody with various note values, including eighth and sixteenth notes, and rests. The second staff continues the melody, featuring a "pizz. med. h." (pizzicato medio) instruction. The third staff concludes the piece with a double bar line and the word "FINE". The piece is signed "Audrey" at the top left and "Rall." at the bottom right.

Rochester, 28/01/2000

Saxi Contralto Mib-1°

CANTO AL BEATO D. LENTINI

Audante

Handwritten musical score for Saxi Contralto Mib-1°. The score is written on four staves. It begins with a treble clef, a key signature of one flat (Bb), and a 2/4 time signature. The music is marked 'Audante'. The first staff contains a series of eighth and sixteenth notes, with some measures marked with '+' signs. The second staff continues the melody. The third staff features a triplet of eighth notes marked with a circled '3'. The fourth staff concludes with a double bar line, a repeat sign, and the word 'FINE'. There are various performance markings throughout, including 'p' (piano), 'f' (forte), and 'rall.' (rallentando).

Eleborazione e strumentazione per banda
del M^o Alessandro Turchiello

2° Saxi Contralto Mib-

CANTO AL BEATO D. LENTINI

Audante

Handwritten musical score for 2° Saxi Contralto Mib-. The score is written on four staves. It begins with a treble clef, a key signature of one flat (Bb), and a 2/4 time signature. The music is marked 'Audante'. The first staff contains a series of eighth and sixteenth notes, with some measures marked with '+' signs. The second staff continues the melody. The third staff features a triplet of eighth notes marked with a circled '3'. The fourth staff concludes with a double bar line, a repeat sign, and the word 'FINE'. There are various performance markings throughout, including 'p' (piano), 'f' (forte), and 'rall.' (rallentando).

Eleborazione e strumentazione per banda
del M^o Alessandro Turchiello

Roccaraso, 28/01/2000

Sax. ténor et Sib.

CANTO AL BEATO D. LENTINI

Audante

Elaborazione e strumentazione per banda

del M^o Alessandro Mendele

Sax. baritono e Sib.

CANTO AL BEATO D. LENTINI

Audante

Elaborazione e strumentazione per banda

del M^o Alessandro Mendele

Sax. bno 4**b**
Andante

CANTO AL BEATO D. LENTINI

Eleborazione e strumentazione per banda
del M^o Alessandro Suennele

Roccapietra, 28/01/2000

1^o Corni Mib.
2^o Corni Contralto Mib.

CANTO AL BEATO D. LENTINI

Eleborazione e strumentazione per banda
del M^o Alessandro Suennele

1° corni mib.
2° fl. e up. Contralto mib.

CANTO AL BEATO D. LENTINI

Andante

①
②
③
④
FINE
nall.

Elaborazione e strumentazione per banda
del M^o Alessandro Muscarelli

Roccaraso, 28/01/2000

1° trombe 1b.

CANTO AL BEATO D. LENTINI

Andante

①
②
③
④
FINE
nall.

Elaborazione e strumentazione per banda
del M^o Alessandro Muscarelli

1^a Trombe Lib.

CANTO AL BEATO D. LENTINI

Audace

Elaborazione e strumentazione per banda
del M.^o Alessandro Zucchi

Roccaraso, 28/01/2000

1^a Trombe Lib.

CANTO AL BEATO D. LENTINI

Audace

Elaborazione e strumentazione per banda
del M.^o Alessandro Zucchi

Roccaraso, 28/01/2000

1^o Trombone Tenore 2^{do} CANTO AL BEATO D. LENTINI

Audiente

p *f* *1-2-3 v.* *h v.* *FINE* *rall.*

Elaborazione e strumentazione per banda

del M^o Alessandro Smeruolo

Roccapietra, 28/01/2000

1^o Trombone Tenore 2^{do} CANTO AL BEATO D. LENTINI

Audiente

p *f* *1-2-3 v.* *h v.* *FINE* *rall.*

Elaborazione e strumentazione per banda

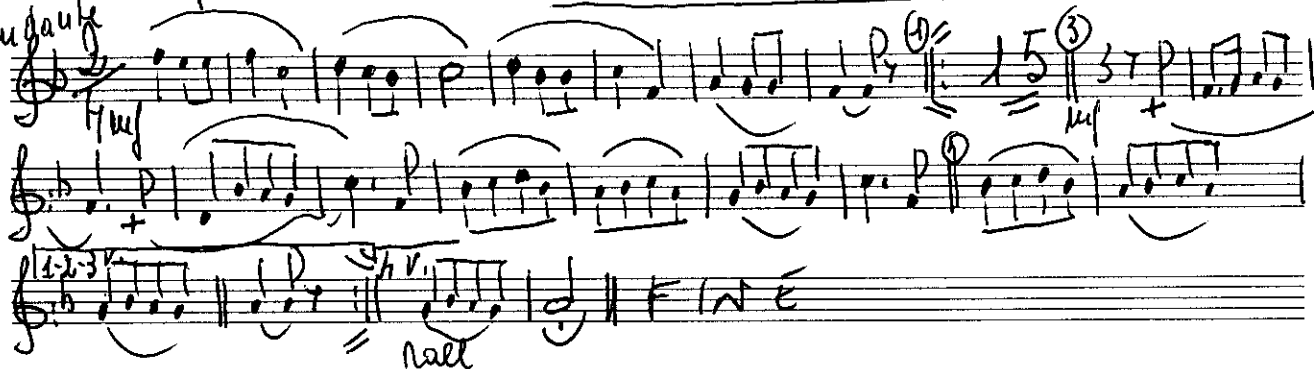
del M^o Alessandro Smeruolo

Roccapietra, 28/01/2000

fl: corno soprano mib.

CANTO AL BEATO D. LENTINI

Augante



Elaborazione e strumentazione per banda

del M^o Alessandro Mucchi

Roccaraso, 28/01/2000

fl: corno soprano A.b.

CANTO AL BEATO D. LENTINI

Augante



Elaborazione e strumentazione per banda

del M^o Alessandro Mucchi

Roccaraso, 28/01/2000

Fliecorrotellare 4/6. CANTO AL BEATO D. LENTINI

Andante

Handwritten musical score for Fliecorrotellare 4/6. The score is in 4/6 time, key of B-flat major, and consists of three staves. The first staff is the vocal line, the second is the piano accompaniment, and the third is the basso continuo line. The tempo is marked 'Andante'. The score includes various musical notations such as notes, rests, and dynamic markings like 'mf' and 'rall.'. The piece ends with 'FINE'.

Elaborazione e strumentazione per banda
del M^o Alessandro Mucchi

Roccarate, 28/01/2000

1^o Fliecorrotellare 4/6. CANTO AL BEATO D. LENTINI

Andante

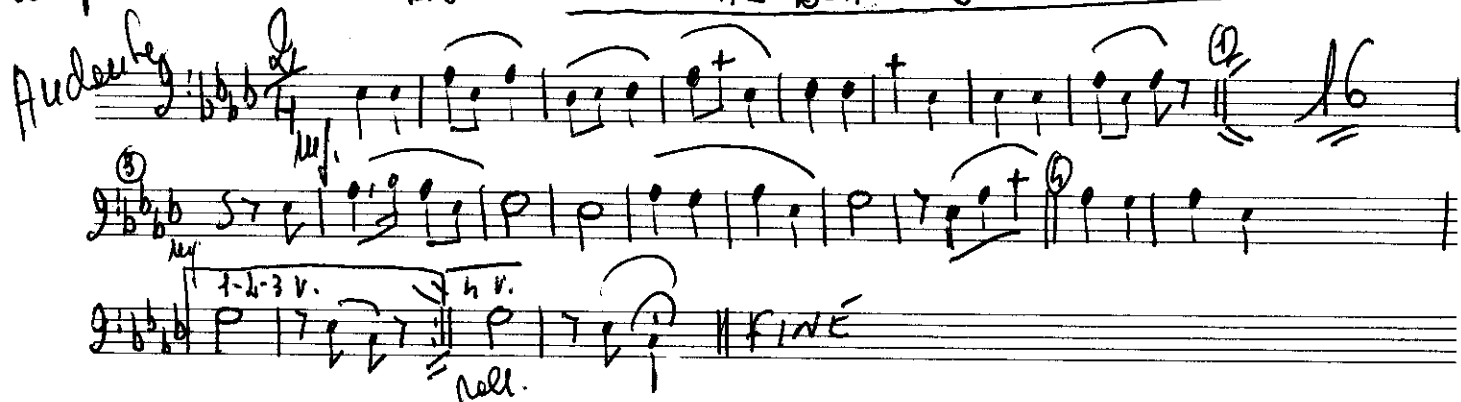
Handwritten musical score for 1^o Fliecorrotellare 4/6. The score is in 4/6 time, key of B-flat major, and consists of three staves. The first staff is the vocal line, the second is the piano accompaniment, and the third is the basso continuo line. The tempo is marked 'Andante'. The score includes various musical notations such as notes, rests, and dynamic markings like 'mf' and 'rall.'. The piece ends with 'FINE'.

Elaborazione e strumentazione per banda
del M^o Alessandro Mucchi

2° Piccolo baritone 2. b.

CANTO AL BEATO D. LENTINI

Audace



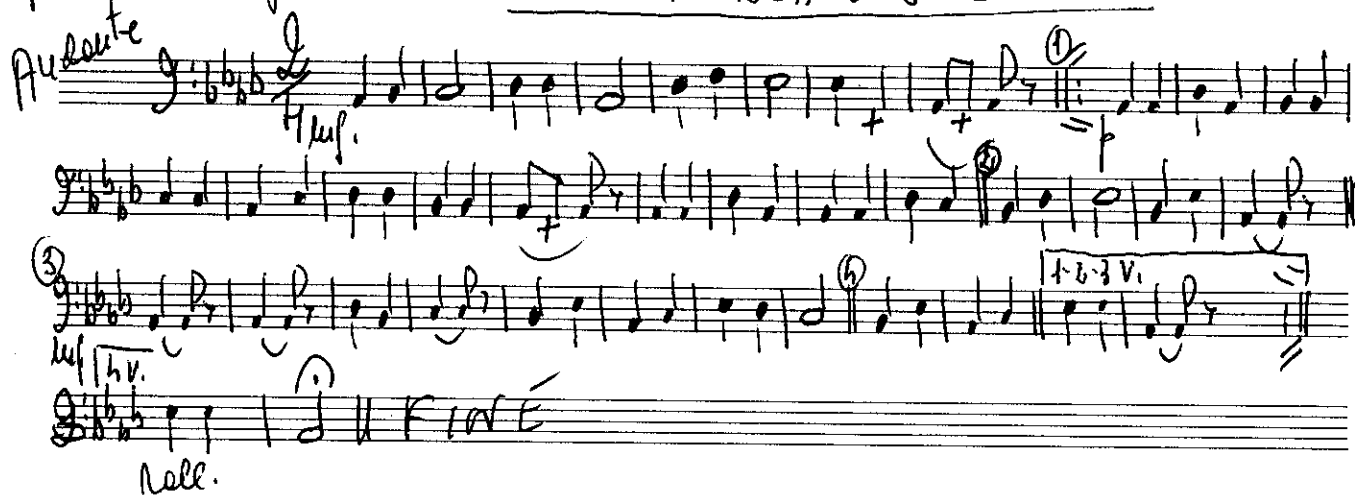
Elaborazione e strumentazione per banda
del M.^o Alessandro Gherardo

Roccasofo, 28/01/2000

Piccolo bano grave mi b.

CANTO AL BEATO D. LENTINI

Audace



Elaborazione e strumentazione per banda
del M.^o Alessandro Gherardo

Roccasofo, 28/01/2000

2^o Flauto baritono 4^b.

CANTO AL BEATO D. LENTINI

Audace

Elaborazione e strumentazione per banda
del M^o Alessandro Giusi

Roccasoletto, 28/01/2000

1^o Flauto baritono 4^b.


CANTO AL BEATO D. LENTINI

Audace

Elaborazione e strumentazione per banda
del M^o Alessandro Giusi

G. Cama e figli

CANTO AL BEATO D. LENTINI


Audace 

Elaborazione e strumentazione per banda
del M.^o Alessandro Smeraldi

Roccarate, 28/01/2000

G. Cama e figli

CANTO AL BEATO D. LENTINI

Audace 

Elaborazione e strumentazione per banda
del M.^o Alessandro Smeraldi